

487500

489000

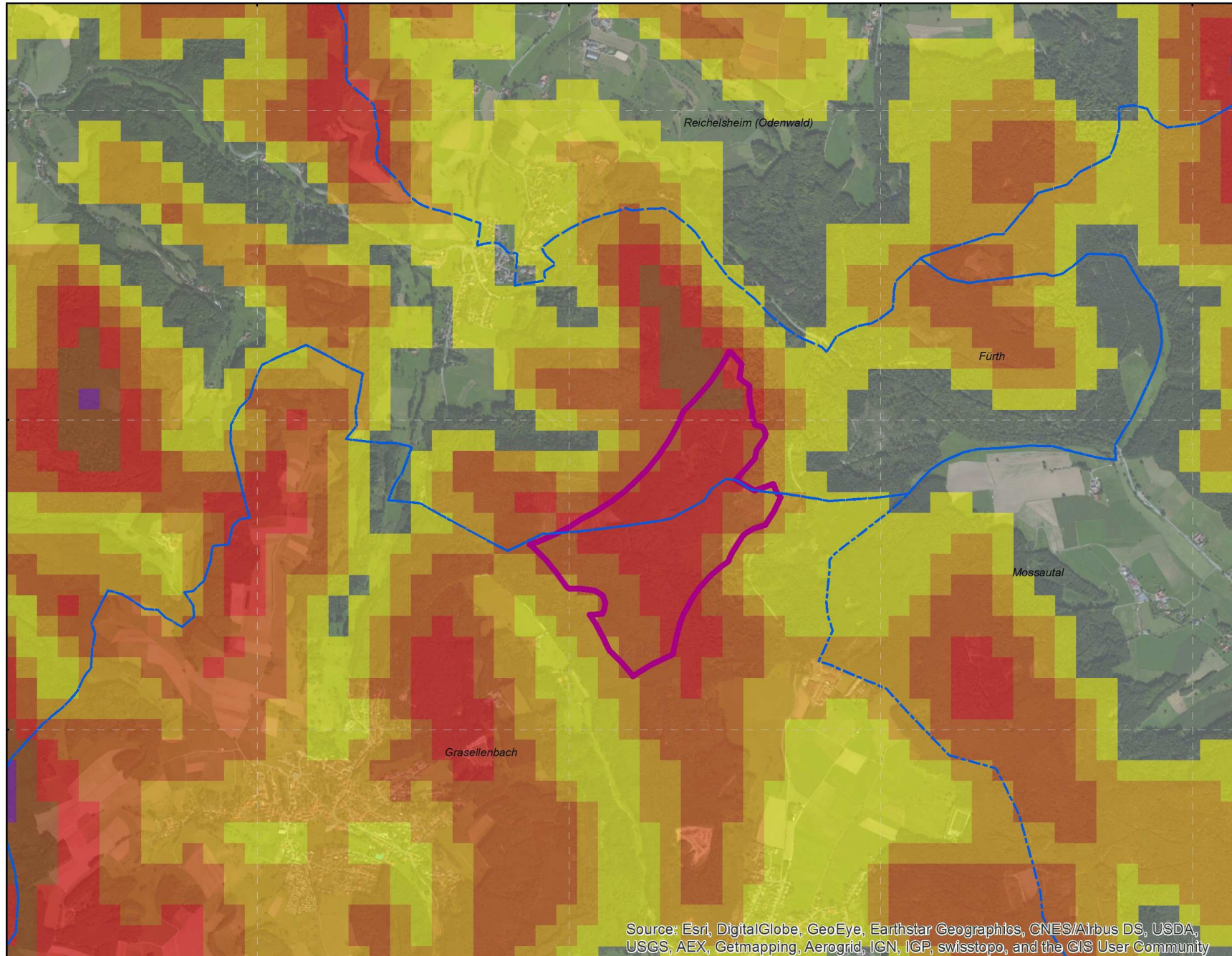
490500

492000

5501500

5500000

5498500





Projekt:

WP Kahlberg (Fürth/Grasellenbach)




Windverhältnisse lt. Windatlas
TÜV Süd auf 140 m Höhe

Stand: 10.02.2016

Legende

-  Gemeinden
-  Entwurf Vorranggebiet

Windgeschwindigkeit

-  5,5 m/s
-  5,75 m/s
-  6 m/s
-  6,25 m/s
-  6,5 m/s
-  6,75 m/s

Koordinatensystem: ETRS 1989 UTM Zone 32N
Projektion: Transverse Mercator

Maßstab: 1:25.711



Source: Esri, DigitalGlobe, GeoEye, Earthstar Geographics, CNES/Airbus DS, USDA, USGS, AEX, Getmapping, Aerogrid, IGN, IGP, swisstopo, and the GIS User Community

Quelle(n): Eigene Darstellung und Berechnung im Bereich Ertrags- und Standortanalyse

Bundesland: Hessen

Planungsregion: Rhein-Neckar

Landkreis: Bergstraße

Gemeinde(n): Fürth, Grasellenbach

