

443000

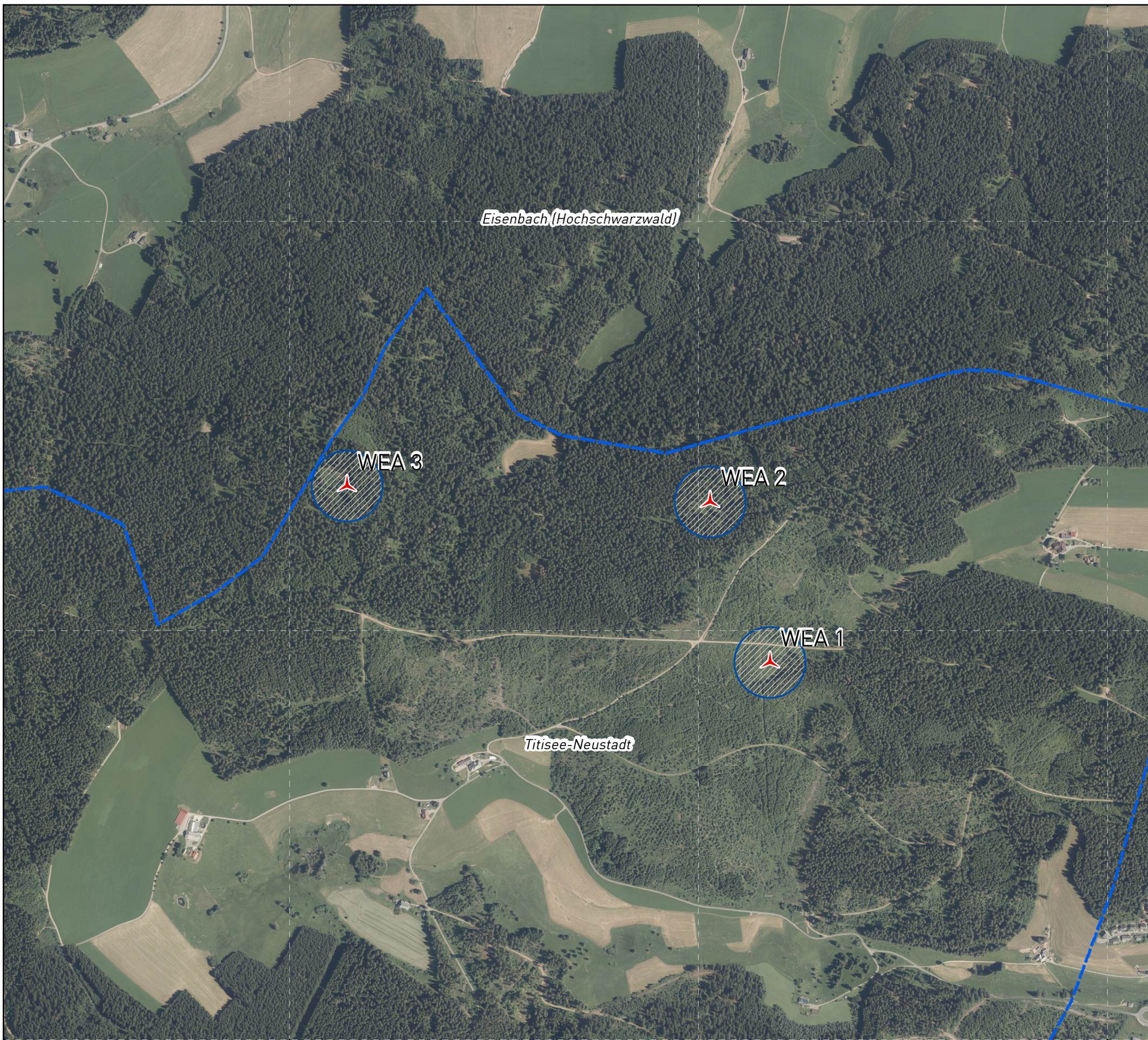
444000

445000

5314000

5313000

5312000



Eisenbach (Hochschwarzwald)

WEA 3




WEA 2

WEA 1

Titisee-Neustadt

Projekt: Windpark Titisee-Neustadt  
Kolmen  
Karteninhalt: Übersicht Luftbild

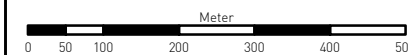
Legende

-  Anlagenstandorte beantragt
-  Abstandsfläche (R = 86,45 m)
-  Gemeinden

Bundesland: Baden-Württemberg  
Landkreis: Breisgau-Hochschwarzwald  
Gemeinde(n): Titisee-Neustadt, Eisenbach  
Gemarkung(en): Schwärzenbach, Schollach

Maßstab (A3): 1:10.000

Koordinatensystem: ETRS 1989 UTM Zone 32N  
Projektion: Transverse Mercator



Erstellt von: EnBW  
Stand: 23.09.2021

